

Global Wine Management Portal



Arosys Technologies (P) Ltd
BR-16, 3rd Floor, RDA Building
Sharda Chowk , RAIPUR (C.G.) INDIA
Contact No:+91 771 4076211
Email: info@arosys.com

Content

- Project Background
- Project Architecture
- Project Technologies
- Project Flow
- Arosys Role in Project
- Project Team
- Arosys Profile
- Our Clients

Project Background

Business Goal

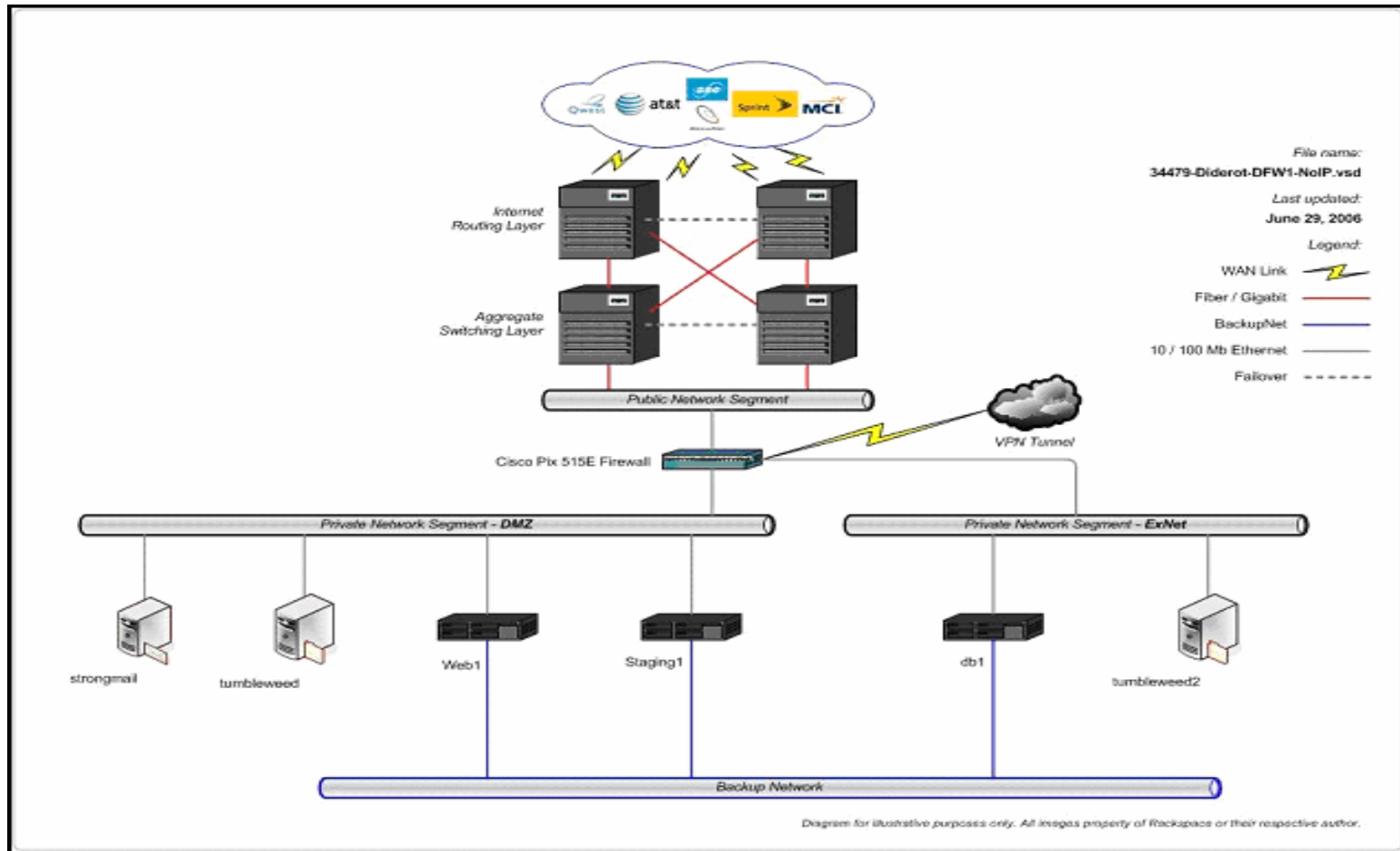
To create a Wine Inventory database and Web portal that will target high-end restaurants (Partners), and sophisticated, high income Urban and Sub-Urban educated frequent diners (Members) to build a wine-inventory and member behavior database. This platform will mirror restaurant's wine inventory, and will provide restaurants (Partners) with an application to update their inventory on the database through an online portal.

The platform will evolve into a significant marketing, research, and sales tool for both partners and wine producers, and will provide a personalized wine portals to wine-consumers (Members).

Project Architecture

Technical Architecture

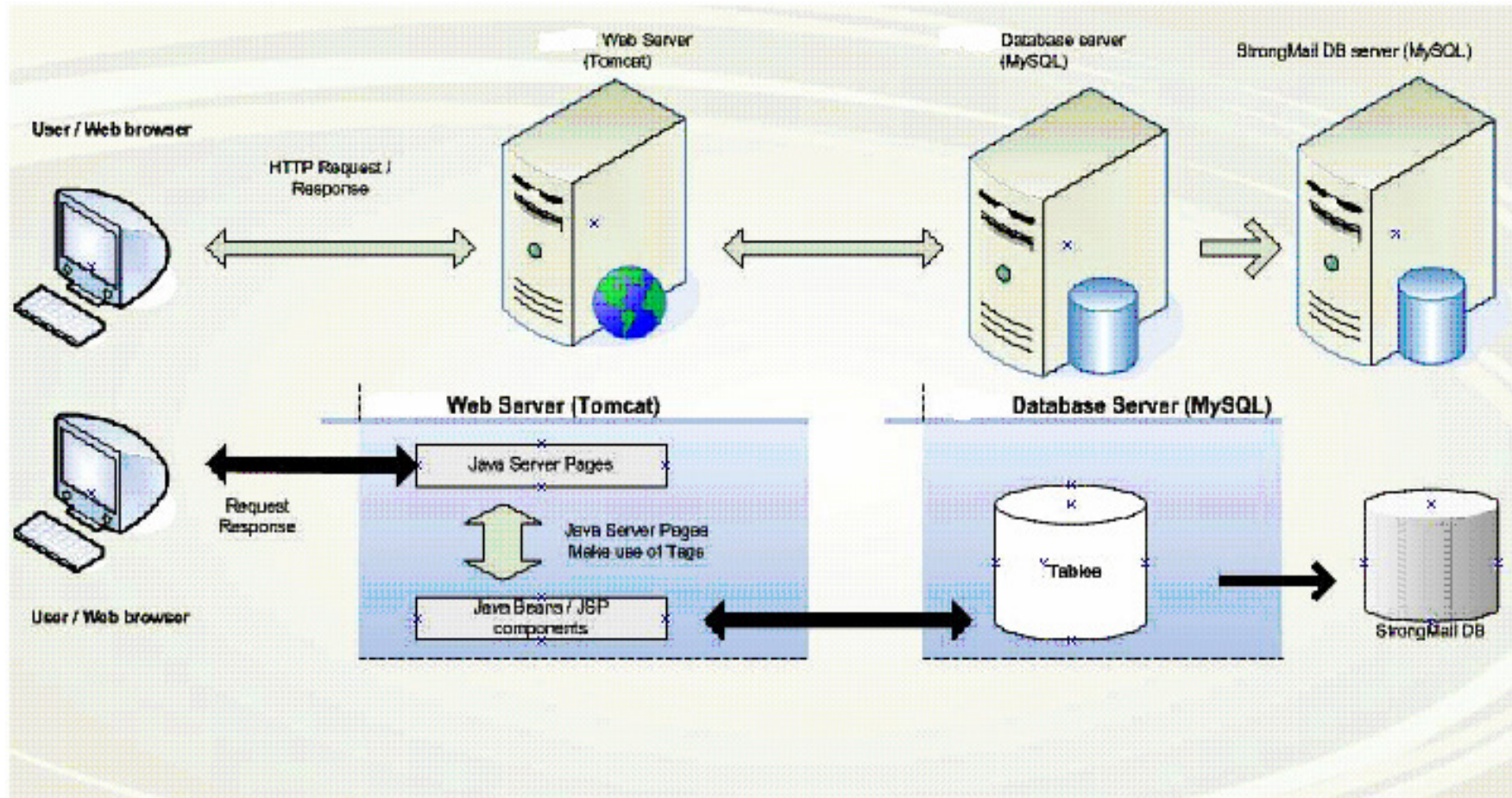
ENTERPRISE SYSTEM ARCHITECTURE



Project Architecture

Technical Architecture

APPLICATION ARCHITECTURE

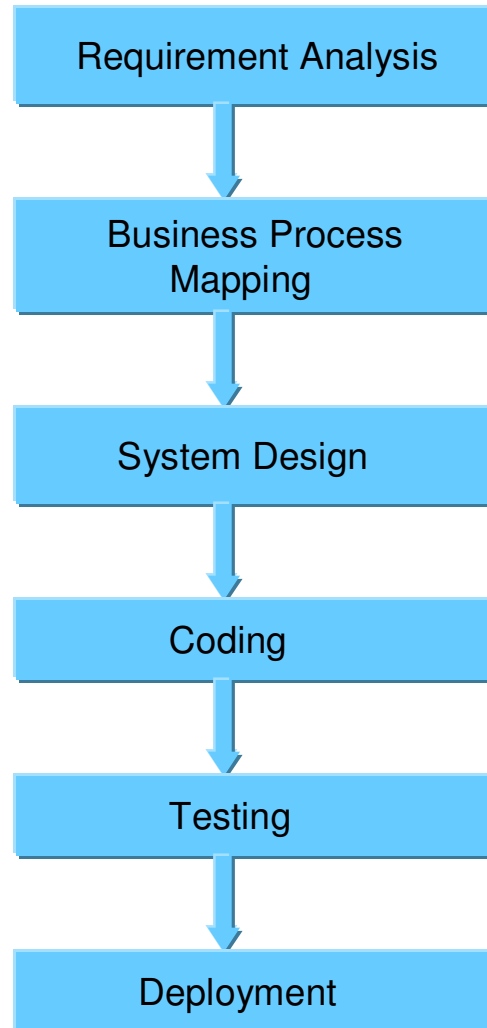


Project Technologies

Wine Portal Technologies

- Operating System - Linux (Red Hat Enterprise Linux ES 4), Windows
- Web Server - Apache Tomcat (5.0.17 or above)
- JSP for UI and elementary DB functionalities
- JAVA SDK (1.4 or above)
- StrongMail Server (3.1)
- Data Base - MySQL DB (4.1.14)
- This application works best with Internet Explorer (6.0)
- Best viewed at 1024x768 pixels

Project Flow



Project Flow

Requirement Analysis

The Portal's goal was to establish a global wine management platform that provides Restaurants with a single application to manage their inventory, POS systems, and wine sales information and will be used, not only by the Restaurants, but also by Consumer and Wine Producers.

System Design

Architecture was concerned with making sure the software system will meet the requirements of the product, as well as ensuring that future requirements can be addressed.
Designing the systems model – graphically creating a model from graphical user interface, GUI screen design, and databases, to placement of objects on screen

Development

IT Professionals executed the design into a physical system by building the database and writing programs.

Testing

Testing comprised of Independent Testing , System Integration Testing, Defect Analysis and Prevention.

Implementation

The phase comprised of placing the portal and using it in the actual workforce ..

Arosys Role in Project

Project Management

- Planning ,Scheduling and Tracking

Development

- Requirement Analysis
- System Design
- Coding for the entire Portal
- Self Testing

Testing and Quality control

- Independent Test
- System Integration testing
- Defect analysis and Prevention
- SQA reviews – coding standard audits

Release and Deployment

- Deployment Document
- Preparing one-click setup program

Application Support

- Live Application Support

Project Team

The team comprised of

- 1 onsite Project Manager
- 1 offshore Project Manager
- 3 Senior System Analysts
- 2 Software Engineers